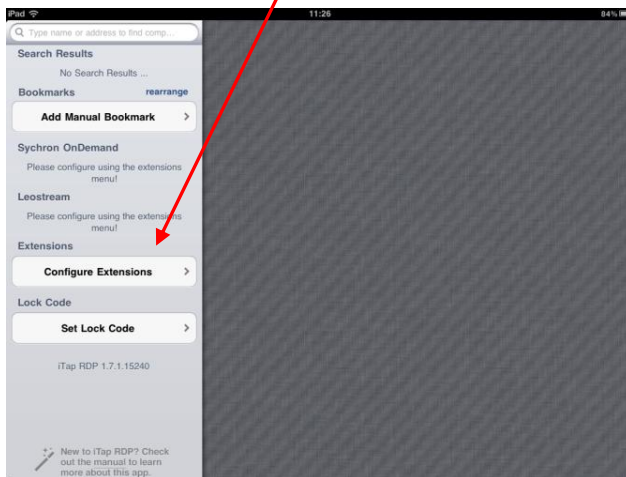


How to get Staff College Remote Access on the iPad

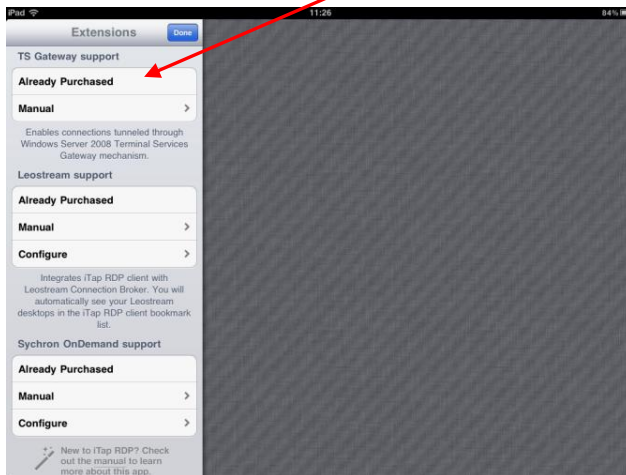
1. Download the iTap RDP application from the Apple App Store
2. Open iTap application



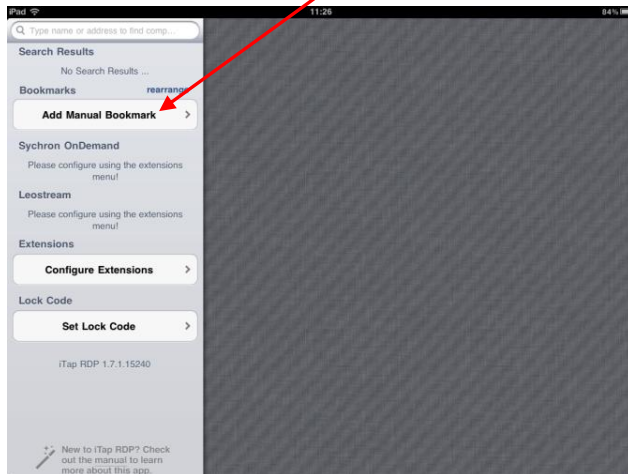
3. Click 'Configure Extensions'



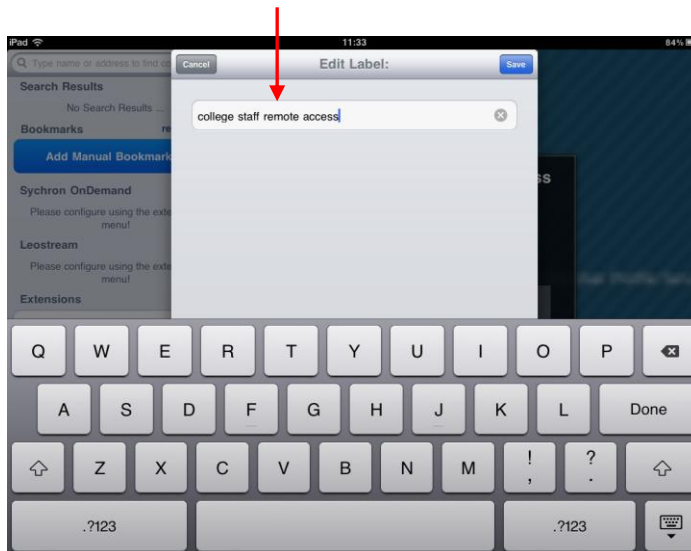
4. Here you need to make sure you have purchased the TS Gateway Support then click Done



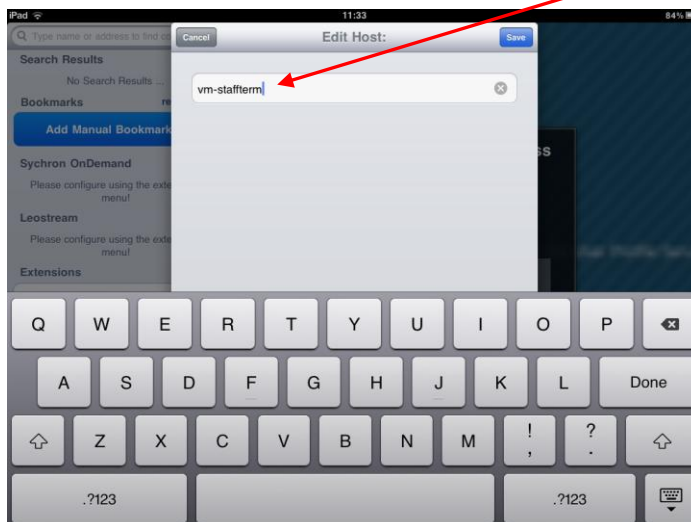
5. Click on 'Add Manual Bookmark'



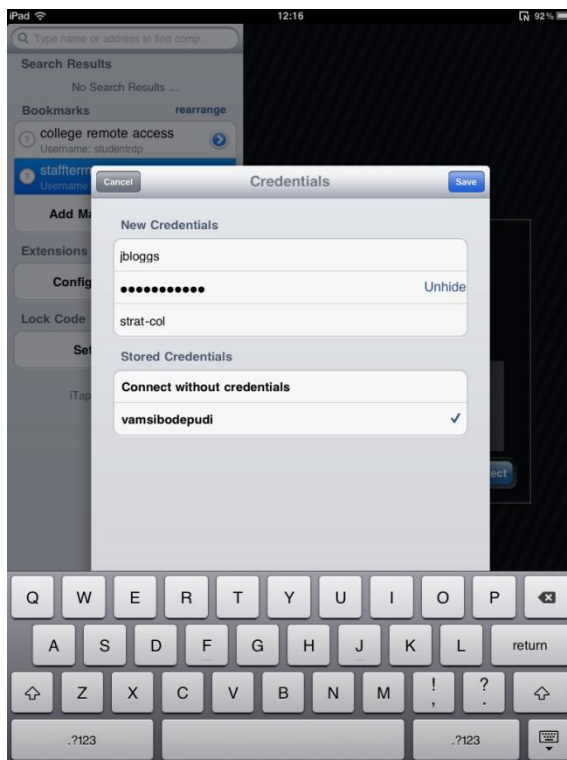
- a. In here you need to enter some details. First there is 'Label' – Please enter 'Staff Remote Access' here and click Save



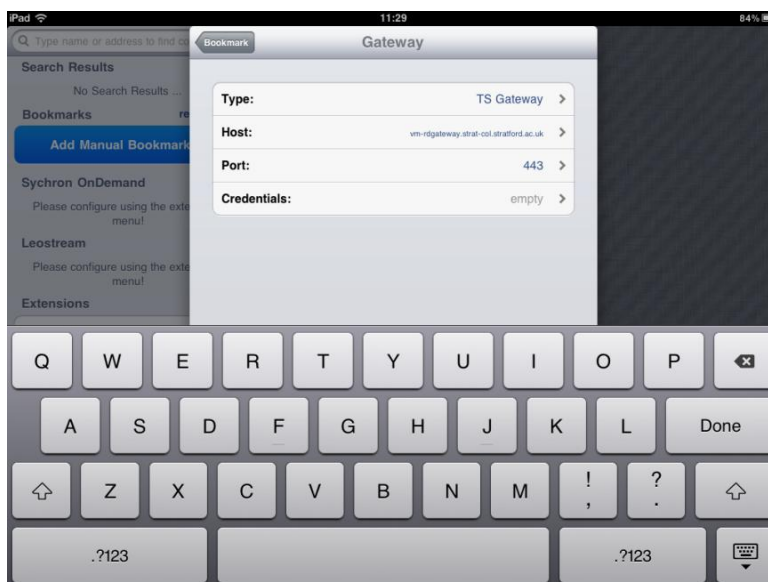
- b. Next you need to enter the 'Host', here you need to enter 'vm-staffterm' and click Save



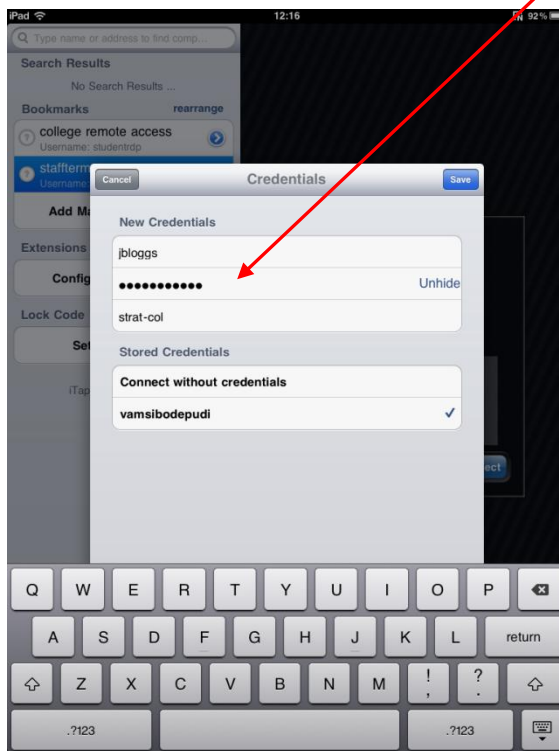
- c. Next you need to enter your credentials, you will need to enter your college username, your college password and then the domain which is 'strat-col' (example below) and then click Save



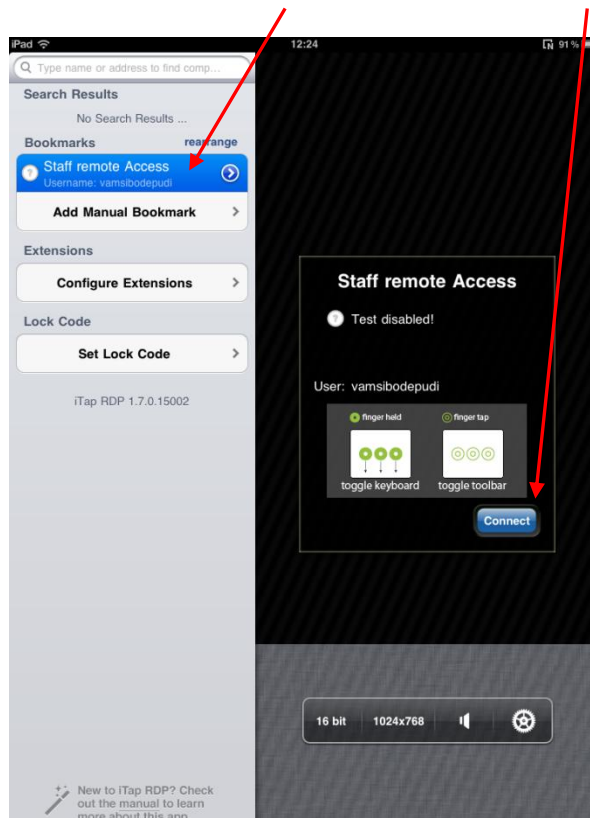
- c. You now need to change the Gateway settings to the following:
- i. Type – TS Gateway
 - ii. Host – vm-rdgateway.strat-col.stratford.ac.uk



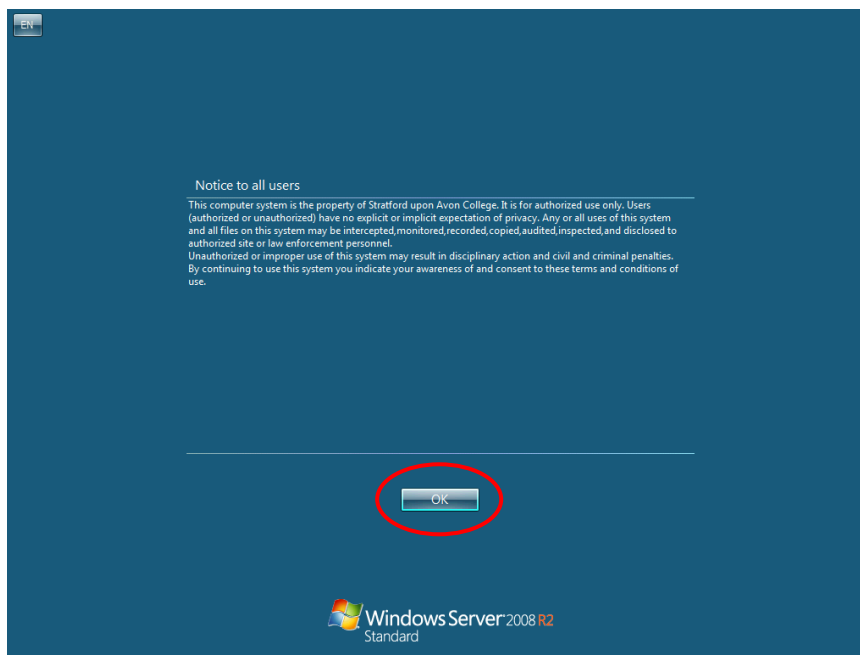
- d. Whilst still on the Gateway settings you need to re-enter your credentials so enter your college username, college password and the Domain is 'strat-col'. Once you have done this, click Save



- e. Once you have filled in all the Gateway settings, click 'Bookmark' and Save
6. Select 'Staff Remote Access' and click 'Connect'



7. Once connected, click OK on screen below (circled)



8. You will now be logged in to the Staff Remote access and be able to access you files, emails and staff intranet from home.

Remember to log out when you are finished